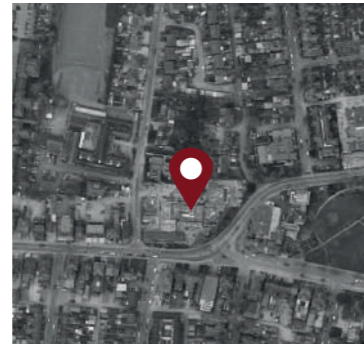


BENEFITS



The economic benefits of the proposed development at **Romsey Close and Toynbee Road, Eastleigh, Hampshire**

The proposed development at Romsey Close and Toynbee Road will stimulate economic growth, assist meeting Eastleigh's housing requirements and add to the authority's revenues.



The proposal



83
Retirement Units

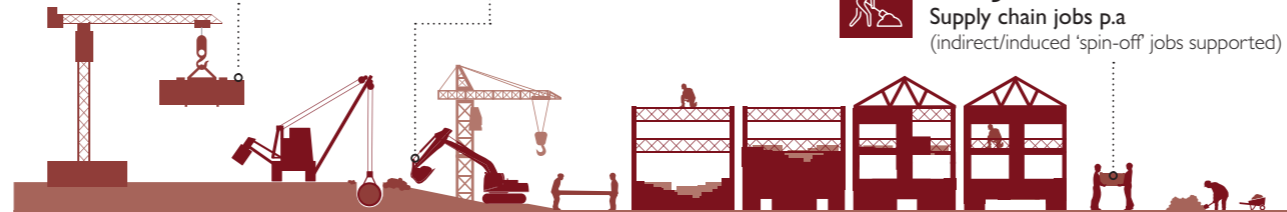
Construction benefits

£14.6m
Construction value
(total construction cost)

£26.6m GVA
Economic output
(additional GVA p.a.)

146 Jobs
Construction jobs p.a.
(1.6 years build period)

177 Jobs
Supply chain jobs p.a.
(indirect/induced 'spin-off' jobs supported)



Operational and expenditure benefits

6 Jobs
Direct jobs
(additional jobs supported by the new retirement development)

£643,000
Resident expenditure
(within local shops and services p.a.)

5 Jobs
Supported jobs
(from increased expenditure in local area)

£239,000
Economic output
(additional GVA p.a.)



Wider benefits

166
Potential existing homes
(released for other buyers)

£378,000
Fiscal savings contribution
p.a. (to the NHS)

LICHFIELDS

